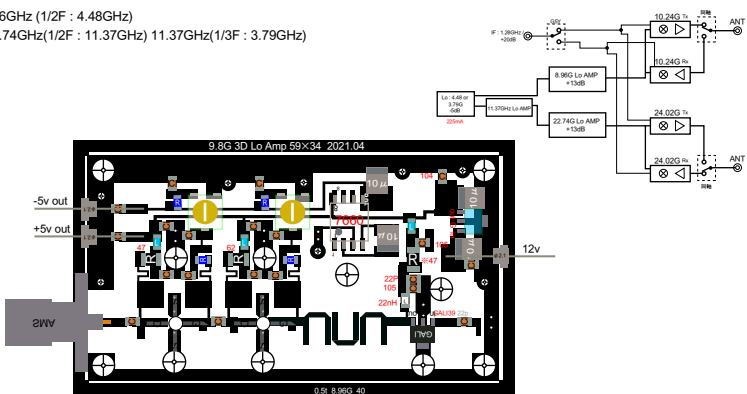
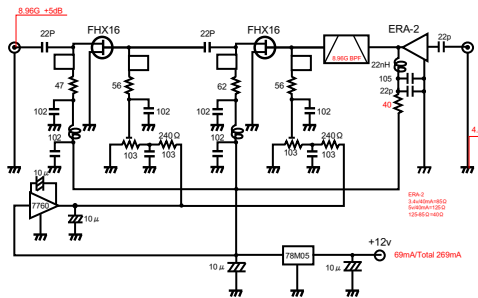


10.24 & 24.02GHz T.V

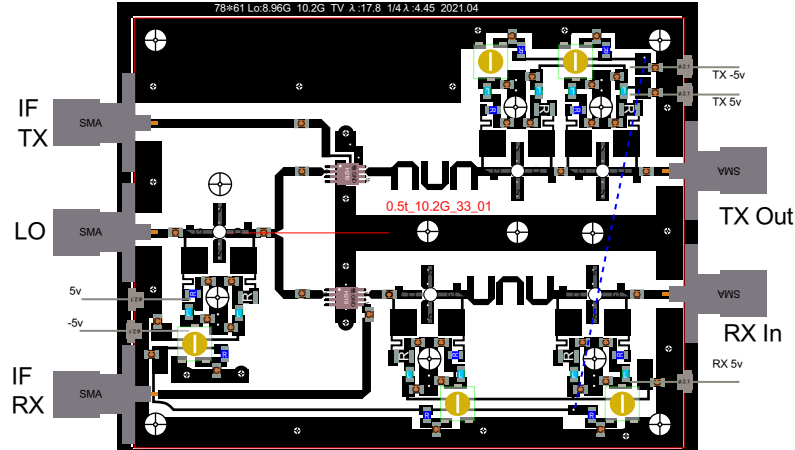
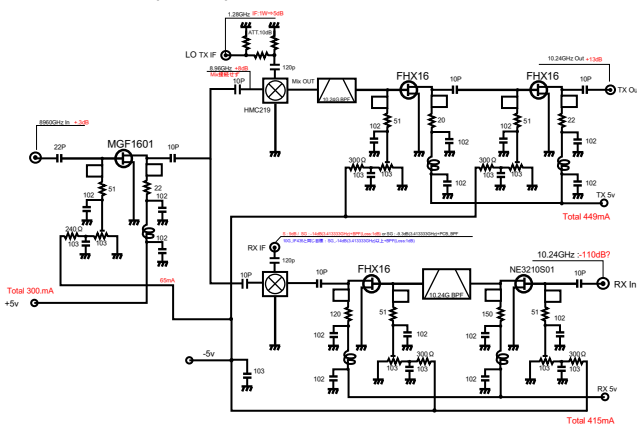
10.24GHz IF:1.28GHz ■Lo : : 8.96GHz (1/2F : 4.48GHz)
 24.02GHz IF:1.28GHz ■Lo : : 22.74GHz(1/2F : 11.37GHz) 11.37GHz(1/3F : 3.79GHz)

※下記のPCBのパターンには最終のスタブ情報は反映されていません。

LO AMP

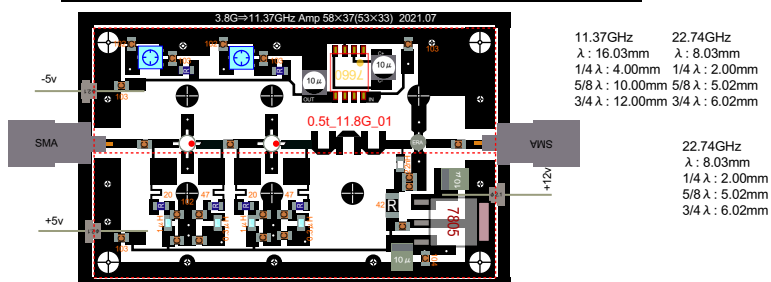
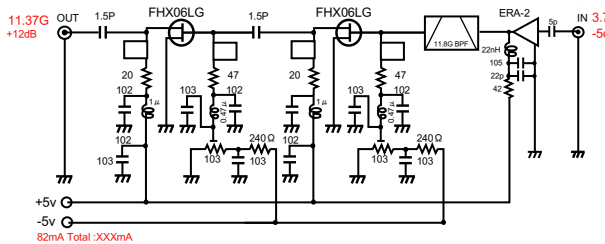


LO AMP / MIX / TX.RX AMP



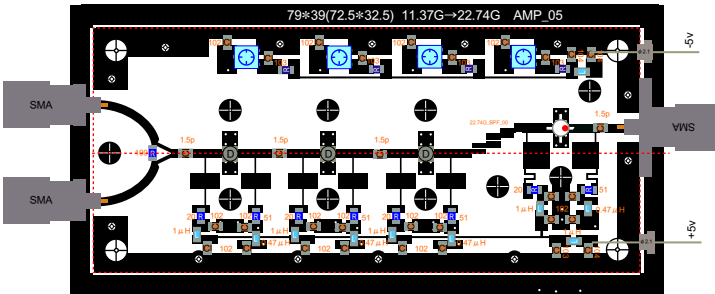
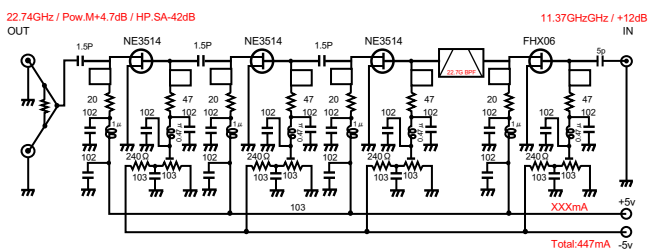
3.79⇒11.37GHz AMP

24.02GHz IF:1.28GHz Lo : 22.74GHz ⇒1/2f 11.37GHz
 11.37GHz ⇒1/3f 3.79GHz

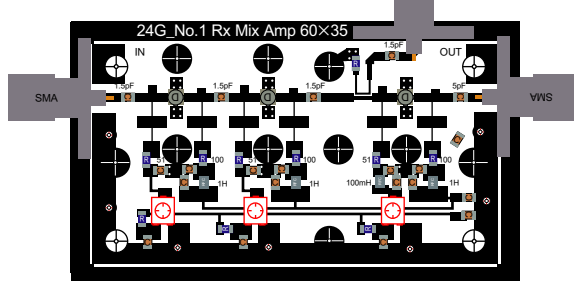
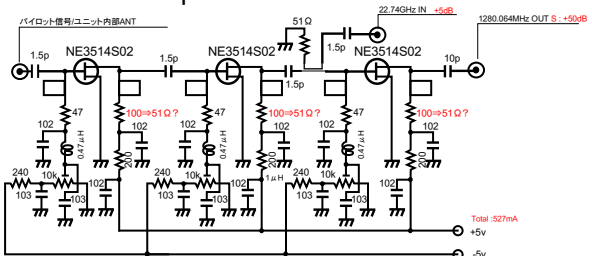


※0.5t_11.8G_01のギャップはプリンターの性能により0.1mm⇒0.15mmに変更

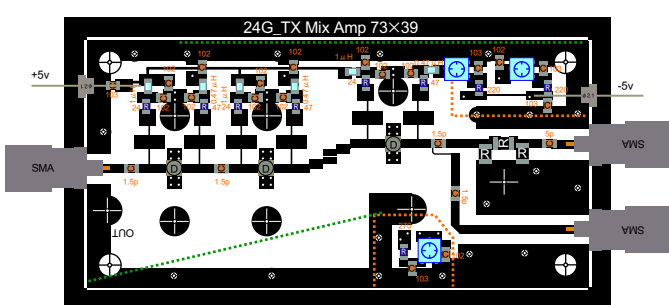
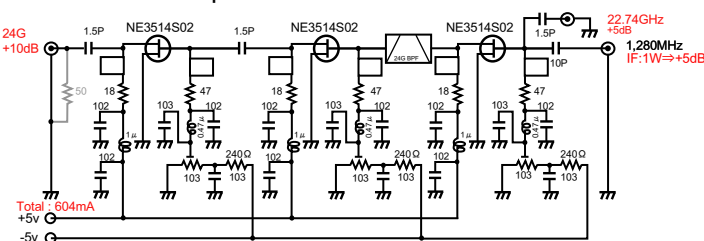
11.37⇒22.74GHz AMP



24GHz RX Amp & Mix



24GHz TX Amp & Mix



※1 シールド
 ※2 吸収材

Drain to Source Voltage : 4v IDSS (VDS = 2 V) : 40mA