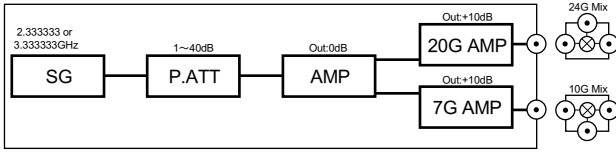


7&20GHz Lo

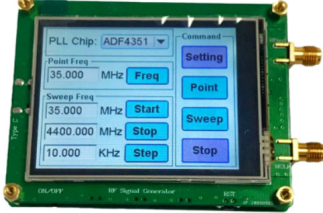
7GHz Sg: $2.333.333(2.333.374)\text{GHz} \times 3 \Rightarrow 6.999.998\text{GHz}$

20GHz Sg: $3.333.333(3.333.374)\text{GHz} \times 3 \times 2 \Rightarrow 19.999.998\text{GHz}$

7GHz & 20GHz Lo system



SG (Max 4.4GHz / 0dB)



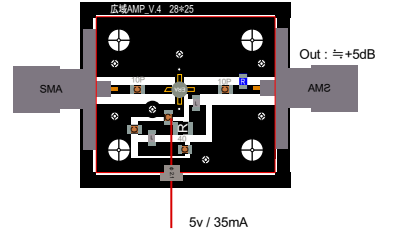
P.ATT



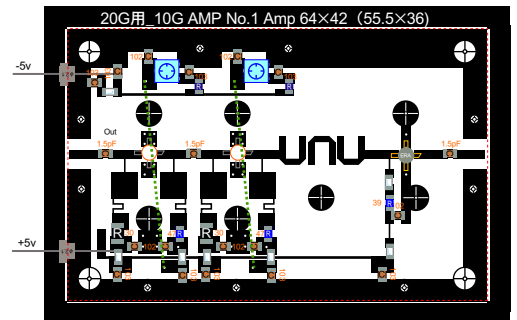
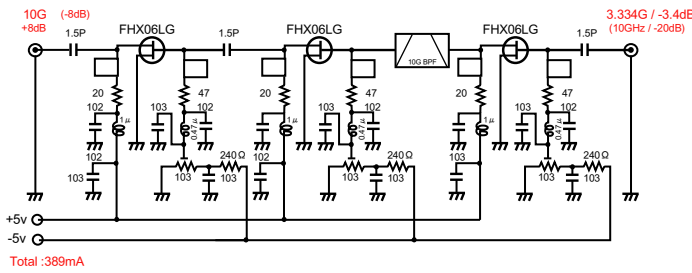
アッテネータSW

ch	dB	A	B
1	3	1 (灰)	2 (緑)
2	6	4 (黄)	2 (緑)
3	10	8 (赤)	2 (緑)
4	20	16 (赤)	4 (黄)
5	32	32 (茶)	4 (黄)
6	40	32 (茶)	8 (橙)

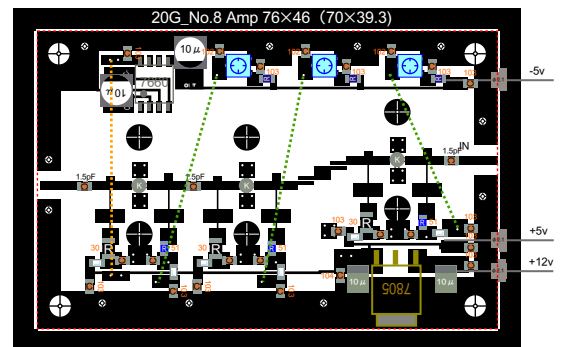
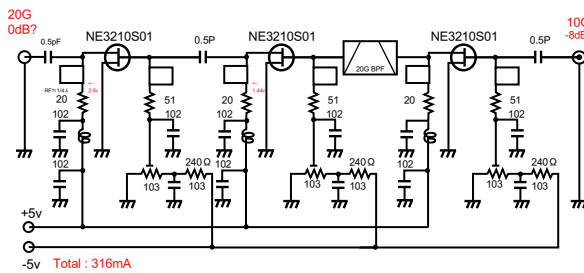
ERA-2+ 4dB AMP



10GHz AMP



20GHz AMP



Mix

